

Oracle's Primavera P6 Enterprise Project Portfolio Management

Oracle's Primavera P6 Enterprise Project Portfolio Management is the most powerful, robust and easy-to-use solution for prioritizing, planning, managing and evaluating projects, programs and portfolios.

Oracle's Primavera P6 EPPM is a cloud based Software As a Service solution backed by a global network of Oracle Project Portfolio Management professionals and the assured security, scalability, performance and support from one of the world's largest cloud vendors. It provides a 100% web-based, solution for managing projects of any size, adapts to varying levels of complexity across projects and intelligently scales to meet the needs of all roles, functions, or skill levels in your organization and on your project team.

ENSURE PROJECT DELIVERY SUCCESS FOR ALL YOUR PROJECTS AND PROGRAMS

Primavera P6 Enterprise Project Portfolio Management (Primavera P6 EPPM) is an integrated project portfolio management (PPM) application that includes role-based functionality to match each team member's needs and responsibilities. It provides executives with a real-time view of their organization's project performance, equips project participants with the right blend of usability, power and flexibility to effectively execute projects, and enables workers across all levels of an organization to analyze, record, and communicate reliable information and make timely decisions. Primavera P6 EPPM can easily scale from a single user on a small project to tens of thousands of users engaged in millions of activities across hundreds of projects both on premise and in the cloud. The solution is built on a robust architecture and is designed to deliver high performance with tight security, flexible integration and real time reporting and analytics.

PROJECT MANAGEMENT – ANYTIME, ANYWHERE ACCESS

Primavera P6 EPPM gives the project team anytime, anywhere access to their project information through flexible Web-based user interfaces. Users have alternate interfaces including interactive dashboards, web applications, and simple forms to consume role-specific information. In addition, team members can easily and quickly update status by using any of the interfaces that best accommodate their line of work. Interfaces include the P6 Team Member for iOS, P6 Team Member for Android, P6 Team Member Web (which is optimized to run on a tablet), and an email statusing option.

Interactive activity Gantt charts allow planners, schedulers and project managers to communicate a more accurate and complete graphical representation of a project's schedule, while calendar and activity network views provide team members with an intuitive view for displaying their assignments, along with the required information to perform the work.

Key Benefits

- Unite project teams and stakeholders through collaboration and strong feedback methods
- Reduce the risk of cost and schedule overruns
- Optimize management of all resources for maximum ROI
- Monitor and visualize project performance vs. plan
- Confidently make and keep project commitments

PORTFOLIO AND PROGRAM MANAGEMENT – PRIORITIZING PROJECTS AND OPTIMIZING ORGANIZATIONAL CAPACITY

With Primavera P6 EPPM, project managers can be confident that their projects and programs are aligned with company strategic objectives. By providing a consistent overview and analysis of the portfolio or program as projects are added and removed, the Portfolio and Program Management module enables project managers to manage incoming demand and select just the right balance of projects – one that ensures resources are not overextended and that project performance can be easily quantified and communicated to project stakeholders.

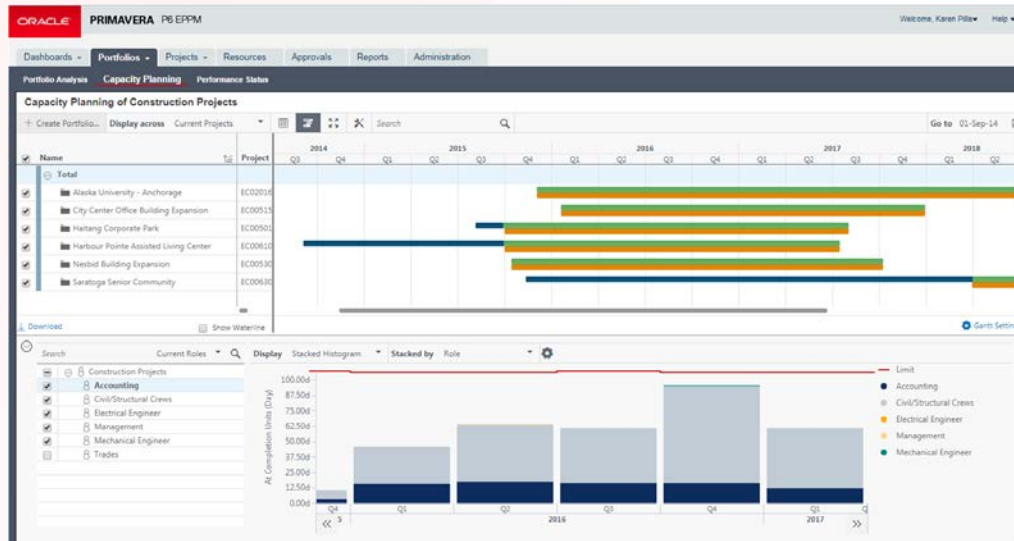


Figure 1. Portfolio Management assists organizations with critical, executive-level decision

Key Features

- Flexible user interface
- Streamlined Enterprise reporting
- Team member interfaces for gathering status updates
- Integrated risk management
- Resource management and optimization views

PLANNING AND RISK MANAGEMENT – EXECUTING COMPLEX PROJECTS WITH EASE

Many organizations have hundreds – even thousands – of projects underway at any given time. Crossing normal business hierarchies and chains of command, these projects present an organization-wide management challenge. Primavera P6 EPPM helps business management meet that challenge head-on with a Planning and Scheduling module.

Primavera P6 EPPM is ideal for organizations that need to simultaneously manage multiple projects and support multi-user access, since it provides multi-user, multi-project functionality (with the ability to extend functionality based on user-definable data). It also offers scheduling and resource control capabilities and support for multi-tiered project hierarchies, resource scheduling, data capture and customizable views.

Functionality including industry-standard risk management and robust reporting and analytics, enables project driven organizations to create achievable resource optimized, risk-adjusted plans, find ways to deliver projects more efficiently, and never be surprised by unexpected issues, risks or downward trends across projects.

RESOURCE MANAGEMENT – MATCHING PEOPLE WITH PROJECTS

Supporting both top-down and bottom-up resource request and staffing processes, Primavera P6 EPPM makes it easy for project and resource managers to communicate their requirements and decisions throughout a project's lifecycle. By providing a graphical analysis of resource and role

utilization, Primavera P6 EPPM helps project teams manage resources in a dynamic environment. This allows managers to see where resources are being used across all programs and projects, as well as their forecasted future use. Because all information is located in one centralized system, resource conflicts become apparent to project and resource managers, eliminating unexpected delays or unforeseen resource limitations. The result: greater visibility into resource demand and capacity means maximized resource use.

TRACKING PROGRESS TO GAIN INSIGHTS INTO COSTS AND RESOURCE USE

Primavera P6 EPPM makes it easy for managers to track, capture, and analyze the time team members spend on project-based work by providing them with interfaces that are automatically populated with their own assignments across all projects. Team members can then record both project time (that is, time spent on each task) and nonproject time (such as personal time off). They can also provide additional information directly to the project manager, including document updates, status notifications, and other pertinent feedback.

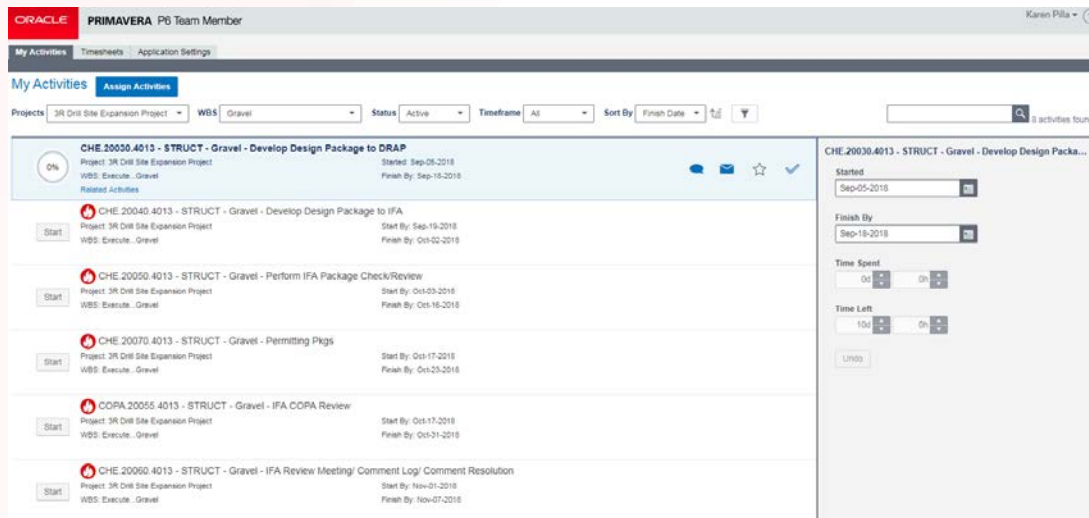


Figure 2. P6 Team Member allows project participants to easily update tasks to reflect the work that has been accomplished.

COLLABORATION AND CONTENT MANAGEMENT – IMPROVING ORGANIZATIONAL PERFORMANCE THROUGH COLLABORATION

Primavera P6 EPPM facilitates team-based collaboration to improve decision-making, streamline coordination and improve efficiency with new business process automation capabilities. For example, it incorporates collaboration and communication, through graphical workflow modeling and interactive configurable forms, into the typical work process instead of requiring project team members to put work aside to communicate and collaborate. The solution's integration to email and mobile devices improves communication between project managers, schedulers and field personnel on a per activity basis, ensuring that project schedules stay on track and that delays are minimized. In addition, existing enterprise content management systems capabilities can be leveraged through Primavera P6 EPPM in order to meet the increasing demand of project documentation control and accessibility.

REPORTING AND ANALYTICS – DRIVING SOUND DECISION-MAKING

Primavera P6 EPPM allows you to schedule and deliver timely and relevant project information

through email, content repository, file share and printer. Users can choose from over 70 standardized reports or produce custom reports in various formats including .pdf, .csv, and .xml, through its integrated reporting system. In addition, Oracle offers the powerful Primavera Analytics, an add-on that enables users to create operational reports and business intelligence on projects and programs. Primavera P6 Visualizer graphically monitors project performance against plan, and complements Primavera Analytics with rich time-phased views. Even large, complex schedules come to life and can be imported and exported to facilitate sharing.

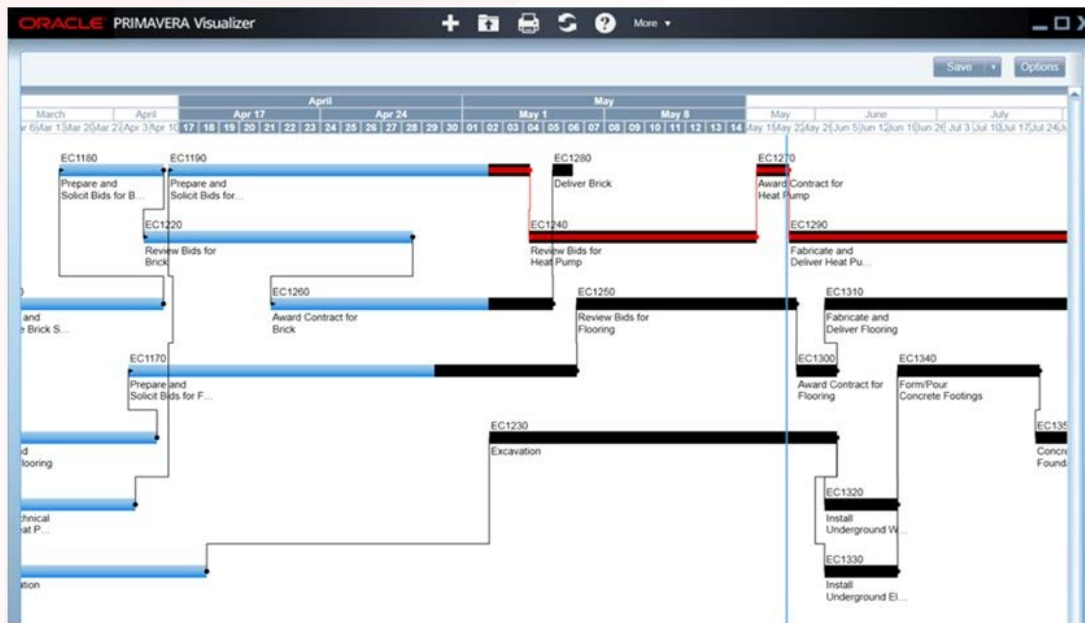


Figure 3. P6 Visualizer can create customizable Gantt charts and Timescaled Logic Diagrams for time-based, daily comparison reporting.

INTEGRATION – INTEROPERATING WITH EASE

Oracle's Primavera P6 EPPM extends, complements, and leverages your existing Oracle enterprise management solutions including Oracle E-Business Suite and Oracle Business Intelligence as well as ERP solutions from SAP and others.

P6 EPPM makes it easy for project and program managers to create custom solutions by taking advantage of its Primavera Gateway, Primavera Web Services, and Integration Applications Programming Interface (API).

Oracle's Primavera Gateway is an extensible integration solution with configuration and customization options for each business application that provide enterprise-wide project, portfolio, and resource management transparency and ensures data consistency between applications.

Oracle's Primavera Web Services provides enterprise-level integration capabilities to connect Primavera solutions to existing line-of-business systems, to help increase productivity and project success.

